

HYDAC Mounting Components

Mounting Components

HYDAC mounting components are used to mount all types of hydro-pneumatic accumulators safely and simply, regardless of the mounting position. Our wide range includes suitable mounting components for every type of static hydro-pneumatic accumulator.

Function

Mounting components are used primarily for the following:

- to fix the accumulator into its position
- to carry the weight of the accumulator
- to counteract the forces exerted by the hydraulic lines

Types

HYDAC offers three styles of clamps:

- HyRac
- Regular Duty (HS)
- Heavy Duty (HSS)

Additionally, for larger accumulators, HYDAC offers:

- Base Brackets (KBK & KMS)
- Mounting Sets (SEB)

Refer to the illustrations and photos to the right.

Construction

They are constructed out of zinc-plated steel with a stainless steel strap (depending on style), utilizing a rubber insert to absorb vibration.

The HyRac and regular duty have a one piece construction with center adjustment.

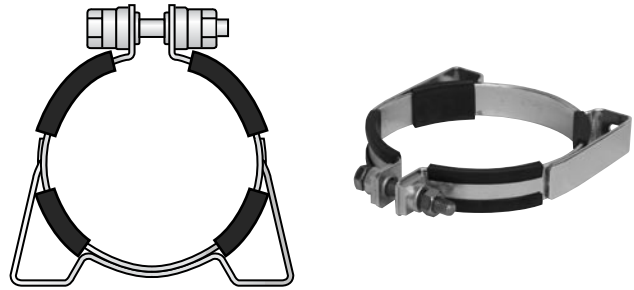
Conversely, the heavy duty clamps have a two piece construction. This allows for easy installation and removal while improving the strength to weight ratio.

HYDAC also offers base brackets for larger accumulators for proper support and isolation from system vibrations. The brackets incorporate a rubber support ring for this reason.

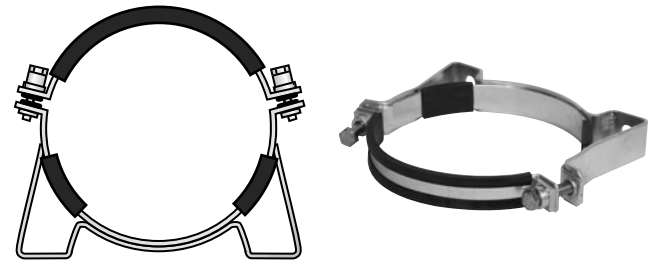
All mounting components can be easily bolted to your system.

Application guides are provided on the following pages to easily match the appropriate mounting components with HYDAC accumulators.

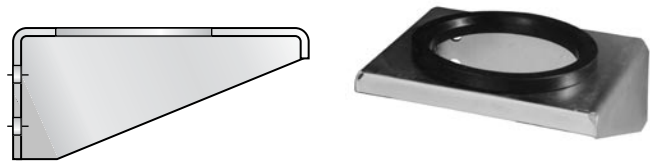
HS - Regular Duty Clamp



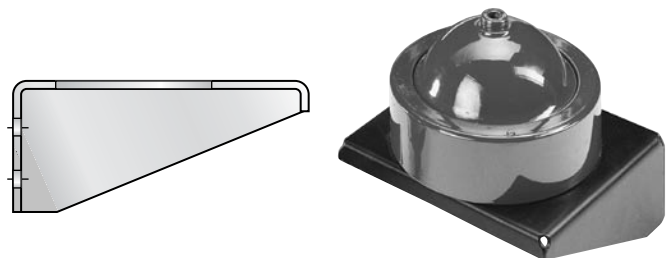
HSS - Heavy Duty Clamp



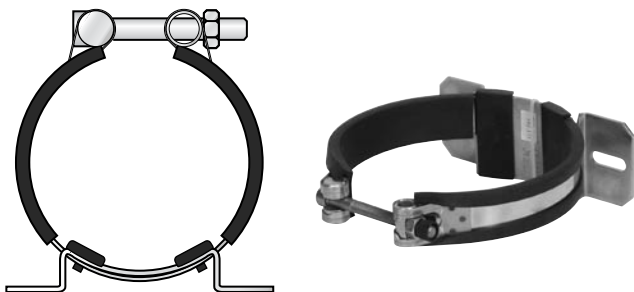
KBK - Base Bracket



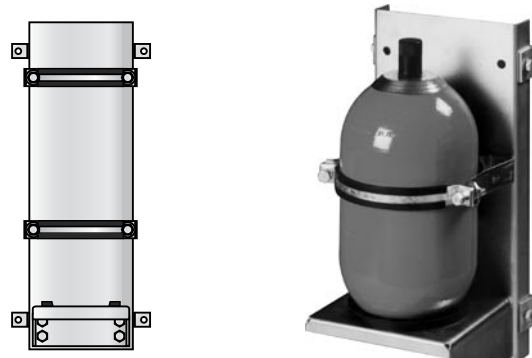
KMS - Base Bracket for Threaded Diaphragm



HyRac Clamp



SEB - Complete Mounting Sets



Mounting Component Selection Guide

These are the mounting solutions that HYDAC recommends for Each Accumulator

Bladder Accumulators and Nitrogen Bottles

SB 330... & SN 330...

Accumulator Size (capacity)	Clamp Type (quantity)	Part Number	Base Bracket Type	Part Number
1 (0.25 gal)	HyRac 110-118 ST (1)	03059446	None	
4 to 6 (1 to 1.5 gal)	HS 167 (1)	02110642	KBK 167/G	02107989
10 to 20 (2.5 to 5 gal)	HSS 222/229 (1)	00235224	KBK 222/G	02100651
32 to 54 (10 to 15 gal)	HSS 222/229 (2)	00235224	KBK 222/G	02100651

SB 600...

Accumulator Size (capacity)	Clamp Type (quantity)	Part Number	Base Bracket Type	Part Number
1 (0.25 gal)	HyRac 121-129 ST (1)	03059450	None	
4 to 6 (1 to 1.5 gal)	HyRac 167-175 ST (1)	00444910	KBK 167/G	02107989
10 to 20 (2.5 to 5 gal)	HSS 222/229 (1) or HSS 242 (1)	00235224 or 00362712	KBK 222/G	02100651
32 to 54 (10 to 15 gal)	HSS 222/229 (2) or HSS 242 (2)	00235224 or 00362712	KBK 222/G	02100651

Piston Accumulators

SK 350...

Accumulator Piston Size ¹⁾	Clamp Type (quantity)	Part Number	Base Bracket Type	Part Number
15 (150 mm)	HyRac 176-185 ST	00445044	KBK 219	00238047
18 (180 mm)	HSS 219 (2)	00237401	KBK 219	00238042
25 (250 mm)	HSS 310 (2)	00237389	KBK 310	00238043
35 (355 mm)	consult factory		consult factory	

1) Example: SK350-20/2112S-210FCF-VE-18 (see page 15 for details)

SK 280...

Accumulator Piston Size ¹⁾	Clamp Type (quantity)	Part Number
05 (50 mm)	HRGKSM 0 R 58-61/62 ST (2)	03018442
06 (60 mm)	HRGKSM 0 R 70-73/73 ST (2)	03018444
08 (80 mm)	HRGKSM 0 R 92-95/96 ST (2)	00444995
10 (100 mm)	HRGKSM 0 R 119-127/124 ST (2)	00444505

1) Example: SK280-1/3218U-280 AAD VB 05 (see page 19 for details)

Diaphragm Accumulators

SBO...E... (Welded type)

Accumulator Type	Clamp Type(2)	Part Number
SBO 250-00.075 E	HyRac 62-65 ST	00445037
SBO 210-0.16 E	HyRac 73-76 ST	00445038
SBO 210-0.32 E	HyRac 89-92 ST	00445039
SBO 210-0.5 E	HyRac 100-105 ST	00444904
SBO 330-0.6 E	HyRac 110-118 ST	03059446
SBO 210-0.75 E	HyRac 121-129 ST	03059450
SBO 200-1 E	HyRac 133-142 ST	03059449
SBO 140-1.4 E	HyRac 143-151 ST	03059448
SBO 210-1.4 E	HyRac 152-159 ST	03059447
SBO 100-2 E	HyRac 160-167 ST	00444910
SBO 210-2 E	HS 167	02110642
SBO 210-2.8 E	HS 167	02110642
SBO 250-3.5 E	HS 167	02110642
SBO 330-0.75 E	HyRac 121-129 ST	03059450
SBO 330-1.4 E	HyRac 143-151 ST	03059448
SBO 330-2.0 E	HyRac 167-175 ST	03059445
SBO 330-3.5 E	HyRac 167-175 ST	03059445

SBO...A6... (Threaded type)

Accumulator Type	Clamp Type	Part Number
SBO 350-0.25 A6	HyRac 110-118 ST	03059446
SBO 500-0.25 A6	HyRac 110-118 ST	03059446
SBO 250-0.6 A6	HyRac 133-142 ST	03059449
SBO 330-0.6 A6	HyRac 133-142 ST	03059449
SBO 600-0.25 A6	HyRac 143-151 ST	03059448
SBO 750-0.25 A6	HyRac 143-151 ST	03059448

Accumulator Type	Base Bracket Type	Part Number
SBO 210-1.3 A6	KMS 200	00359931
SBO 400-1.3 A6	KMS 210	00358989
SBO 180-2 A6	KMS 220	00359922
SBO 250-2 A6	KMS 220	00359922

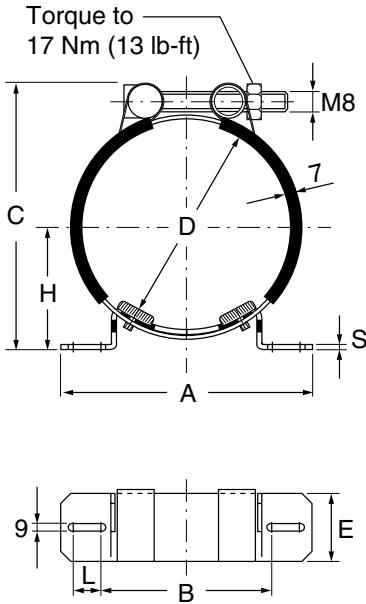
Note: Either one clamp or one Base Bracket is needed for each accumulator listed.

HYDAC Mounting Components

Dimensions

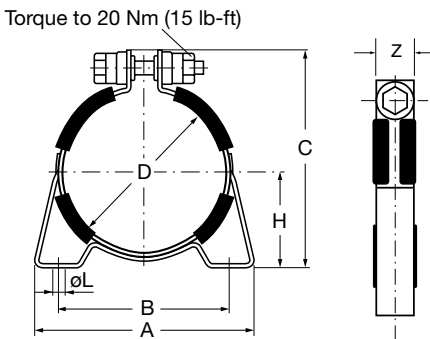
Use the Selection Guide on page 42 to select the appropriate components.

HyRac - Stainless Steel Strap with swivel-bolt adjustment



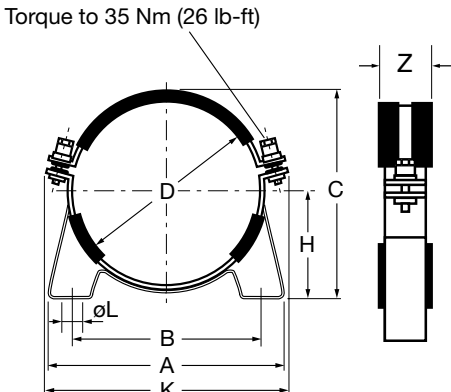
Clamp Model	A	B	C	D (range)	E	H	L	S	Weight kg.(lbs)
HyRac 62-65 ST	120 4.72	85 3.34	90 3.54	62-65 2.4-2.6	40 1.6	39-40.5 1.5-1.6	6 0.24	3 0.12	0.16 (0.35)
HyRac 73-76 ST	120 4.72	85 3.34	101 3.98	73-76 2.9-3.0	40 1.6	49.5-46 1.9-1.8	6 0.24	3 0.12	0.16 (0.35)
HyRac 89-92 ST	120 4.72	85 3.34	116 4.57	89-92 3.5-3.6	40 1.6	51.5-53 2.0-2.1	6 0.24	3 0.12	0.17 (0.37)
HyRac 100-105 ST	156 6.14	100 3.94	135 5.31	100-105 3.9-4.1	60 2.4	59-62 2.3-2.4	18 0.71	3 0.12	0.40 (0.88)
HyRac 106-114 ST	156 6.14	100 3.94	143 5.63	106-114 4.2-4.5	60 2.4	62.5-66 2.5-2.6	18 0.71	3 0.12	0.41 (0.9)
HyRac 110-118 ST	156 6.14	100 3.94	156 6.14	110-118 4.3-4.6	60 2.4	72.5-77 2.8-3.0	18 0.71	3 0.12	0.42 (0.93)
HyRac 121-129 ST	156 6.14	100 3.91	165 6.50	121-129 4.8-5.1	60 2.4	75.5-80 3.0-3.1	18 0.71	3 0.12	0.43 (0.95)
HyRac 133-142 ST	156 6.14	100 3.91	174 6.85	133-142 5.2-5.6	60 2.4	76.5-82 3.0-3.2	18 0.71	3 0.12	0.44 (0.97)
HyRac 143-151 ST	156 6.14	100 3.91	182 7.17	143-151 5.6-5.9	60 2.4	83-86.5 3.3-3.4	18 0.71	3 0.12	0.45 (0.99)
HyRac 152-159 ST	156 6.14	100 3.91	191 7.52	152-159 6.0-6.3	60 2.4	87-91 3.4-3.6	18 0.71	3 0.12	0.46 (1.01)
HyRac 160-167 ST	236 9.29	152 5.98	197 7.76	160-167 6.3-6.6	60 2.4	89-93 3.5-3.7	32 1.3	4 0.16	0.7 (1.54)
HyRac 167-175 ST	236 9.29	152 5.98	207 8.15	167-175 6.6-6.9	60 2.4	92.5-96.5 3.6-3.8	32 1.3	4 0.16	0.72 (1.59)
HyRac 202-210 ST	236 9.29	152 5.98	245 9.65	202-210 7.9-8.3	60 2.4	116-120 4.6-4.7	32 1.3	4 0.16	0.76 (1.68)
HyRac 209-217 ST	236 9.29	152 5.98	255 10.04	209-217 8.2-8.5	60 2.4	122.5-126.5 4.8-5.0	32 1.3	4 0.16	0.77 (1.70)

HS - Regular Duty Clamp, with single center adjustment



Clamp Model	D	D (range)	A	B	C (ref.)	H	ØL	Z	Weight kg.(lbs)
HS 167	167 6.57	164-170 6.46-6.69	185 7.28	153 6.02	211 8.31	92.5 3.64	9 0.35	30 1.18	0.9 2.0

HSS - Heavy Duty Clamp with two-piece construction



Clamp Model	D	D (range)	A	B	C (ref.)	H	K	ØL	Z	Weight kg.(lbs)
HSS 219	219 8.62	216-222 8.50-8.74	268 10.55	216 8.50	240 9.45	123 4.84	285 11.22	15 0.59	40 1.57	1.7 3.8
HSS 222/229	226 8.90	220-231 8.66-9.10	270 10.63	216 8.50	244 9.61	123 4.84	295 11.61	15 0.59	40 1.57	1.7 3.8
HSS 242	242 9.53	231-242 9.10-9.53	268 10.55	216 8.50	265 10.43	136 5.35	305 12.01	15 0.59	40 1.57	1.7 3.8
HSS 286	286 11.26	283-289 11.14-11.38	332 13.07	280 11.02	314 12.36	163 6.42	355 13.98	15 0.59	40 1.57	2.1 4.6
HSS 310	310 12.20	307-313 12.09-12.32	332 13.07	280 11.02	333 13.11	170 6.69	380 14.96	15 0.59	40 1.57	2.1 4.6

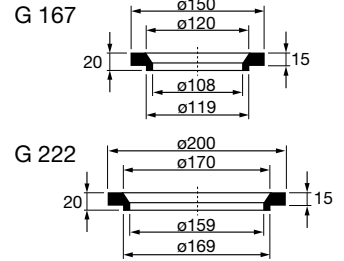
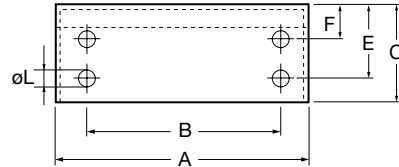
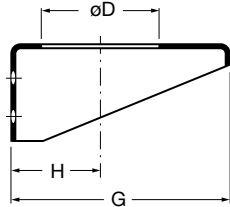
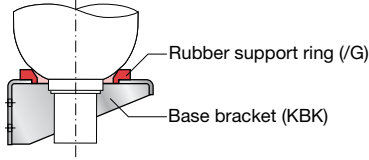
Dimensions are in mm with inches shown below.
Dimensions are for general information only,
all critical dimensions should be verified by requesting a certified print.

Dimensions

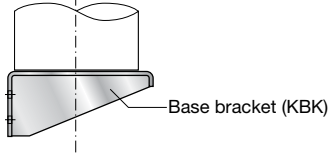
Use the Selection Guide on page 42 to select the appropriate components.

KBK - Base Bracket for Bladder and Piston Accumulators

Bladder Accumulator



Piston Accumulator



Base Bracket with Rubber Support Ring

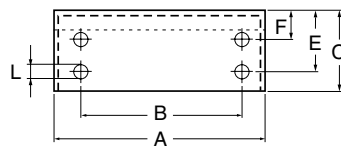
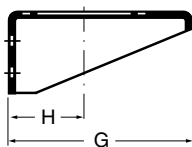
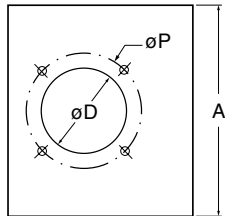
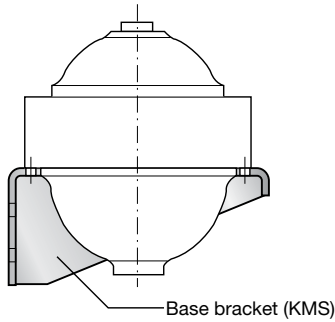
Model	A	B	C	ϕD	E	F	G	H	ϕL	Weight kg. (lbs)	Rubber Support Ring
KBK 167/G	260 10.24	200 7.87	100 3.94	120 4.72	75 2.95	35 1.38	225 8.86	92 3.62	14 0.55	2.6 (5.7)	G 167
KBK 222/G	260 10.24	200 7.87	100 3.94	170 6.69	75 2.95	35 1.38	225 8.86	123 4.84	14 0.55	2.4 (5.3)	G 222

Base Brackets without Rubber Support Ring

KBK 126	175 6.89	100 3.94	60 2.36	65 2.56	36 1.42	N/A	150 5.91	77 3.03	14 0.55	1.1 (2.43)	None
KBK 219	270 10.63	180 7.09	100 3.94	135 5.31	80 3.15	40 1.57	250 9.84	123 4.84	14 0.55	6.5 (14.4)	None
KBK 310	330 12.99	220 8.66	200 7.87	190 7.48	140 5.51	60 2.36	340 13.39	170 6.69	14 0.55	18.3 (40.4)	None

KMS - Base Bracket for Threaded Diaphragm Accumulators

Diaphragm Accumulator



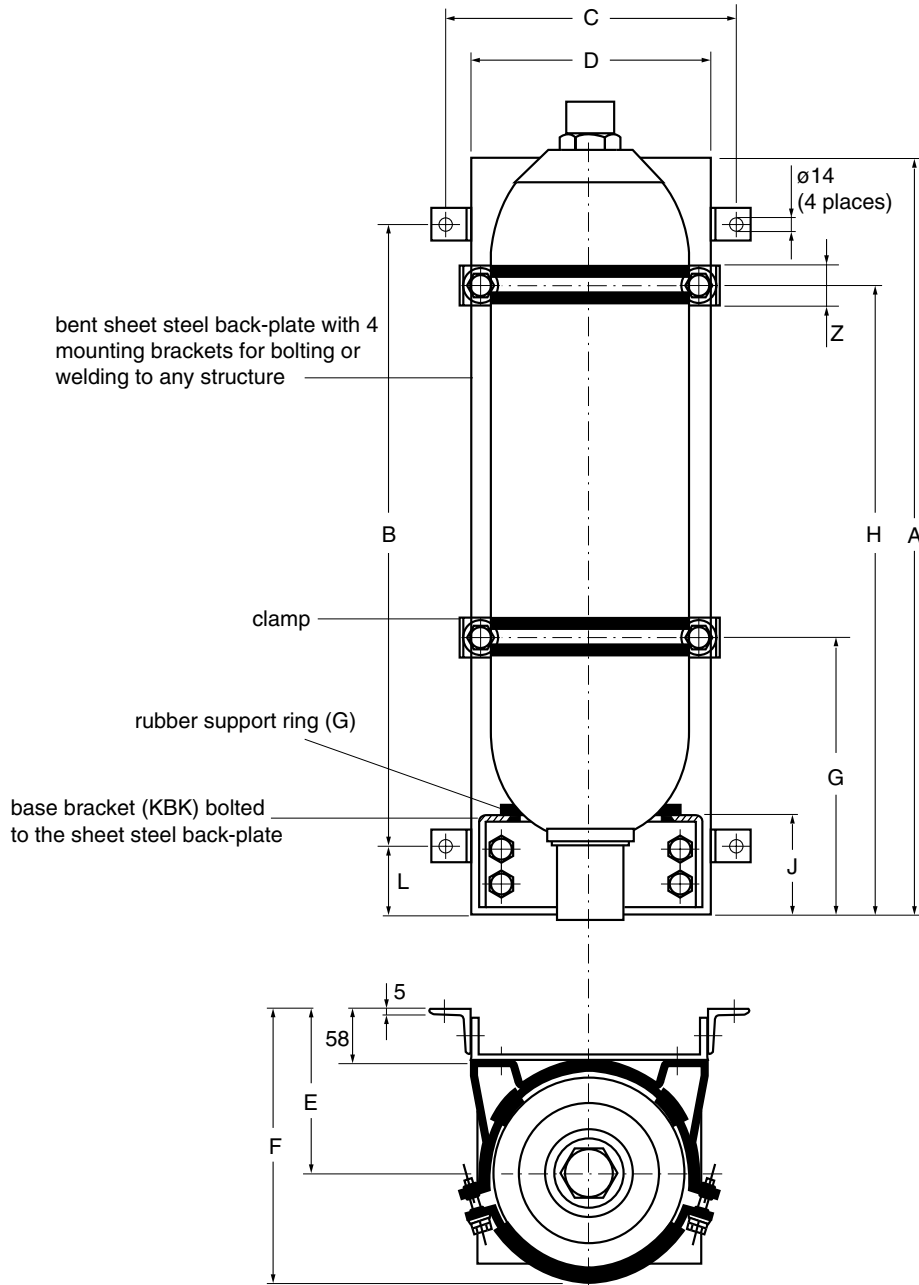
Base Bracket Model	A	B	C	ϕD	ϕP	E	F	G	H	ϕL	Weight kg. (lbs)
KMS 200	270 10.63	180 7.09	100 3.94	148 5.83	160 6.30	80 3.15	40 1.57	250 9.84	123 4.84	14 0.55	6.5 (14.4)
KMS 210	260 10.24	200 7.87	100 3.94	170 6.69	180 7.09	75 2.95	35 1.38	225 8.86	123 4.84	14 0.55	2.4 (5.3)
KMS 220	260 10.24	200 7.87	100 3.94	170 6.69	188 7.40	75 2.95	35 1.38	225 8.86	123 4.84	14 0.55	2.4 (5.3)
KMS 250	260 10.24	200 7.87	100 3.94	192 7.56	204 8.03	75 2.95	35 1.38	225 8.86	123 4.84	14 0.55	2.4 (5.3)
KMS 280	330 12.99	220 8.66	200 7.87	215 8.46	230 9.06	140 5.51	60 2.36	340 13.39	170 6.69	22 0.87	18.3 (40.4)
KMS 300	330 12.99	220 8.66	200 7.87	220 8.66	235 9.25	140 5.51	60 2.36	340 13.39	170 6.69	22 0.87	18.3 (40.4)
KMS 310	330 12.99	220 8.66	200 7.87	245 9.65	265 10.43	140 5.51	60 2.36	340 13.39	170 6.69	22 0.87	18.3 (40.4)
KMS 320	330 12.99	220 8.66	200 7.87	290 11.42	305 12.01	140 5.51	60 2.36	340 13.39	170 6.69	22 0.87	18.3 (40.4)

Dimensions are in mm with inches shown below.
Dimensions are for general information only,
all critical dimensions should be verified by requesting a certified print.

HYDAC Mounting Components

Components & Dimensions

SEB - Mounting Sets for SB 330 Bladder Accumulators



Set Type	Accum. size in gallons	Base Bracket		Clamp		Dimensions in mm (inches shown below)									
		Type	Qty.	Type	Qty.	A	B	C	D	E	F (Ref)	G	H	L	J
SEB 4	1	KBK 167/G	1	HS 167	1	410 16.14	320 12.60	330 12.99	270 10.63	152 5.98	265 10.43	-	270 10.63	45 1.77	95 3.74
SEB 10	2.5	KBK 222/G	1	HSS 222/229	1	570 22.44	420 16.54	330 12.99	270 10.63	180 7.09	317 12.48	-	330 12.99	75 2.95	111 4.37
SEB 20	5	KBK 222/G	1	HSS 222/229	1	570 22.44	420 16.54	330 12.99	270 10.63	180 7.09	317 12.48	-	500 19.69	75 2.95	111 4.37
SEB 32	10	KBK 222/G	1	HSS 222/229	2	1340 52.76	1190 46.85	330 12.99	270 10.63	180 7.09	317 12.48	500 19.69	1160 45.67	75 2.95	111 4.37
SEB 54	15	KBK 222/G	1	HSS 222/229	2	1340 52.76	1190 46.85	330 12.99	270 10.63	180 7.09	317 12.48	500 19.69	1160 45.67	75 2.95	111 4.37