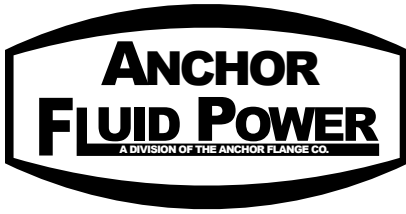


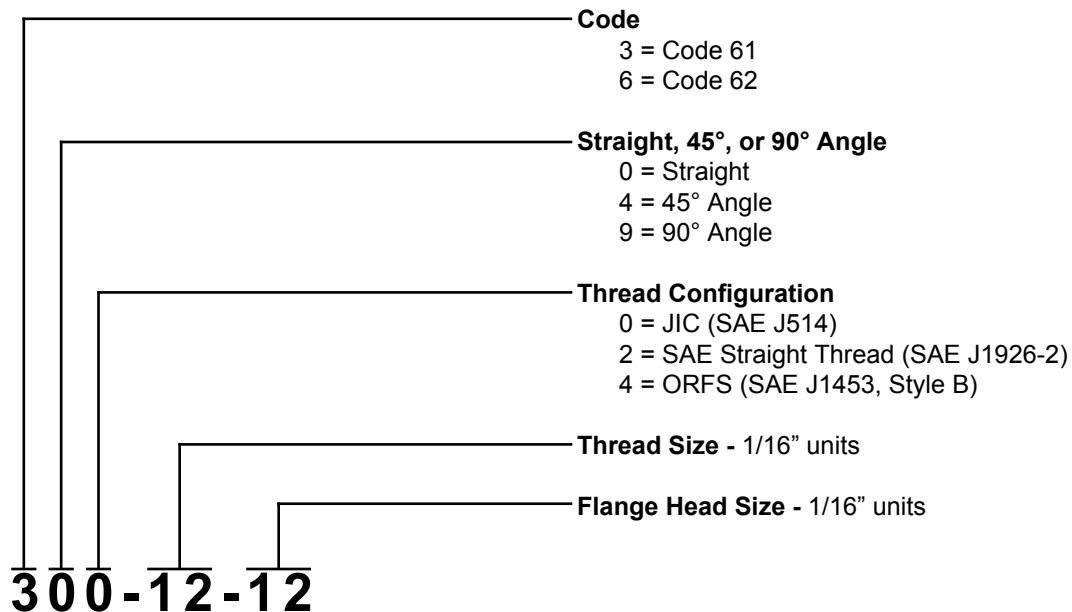
# SAE Split Flange Adapters



Anchor Fluid Power now manufactures a complete range of Split Flange Adapters for use with Anchor's SAE J518 Split Flanges. These offer you many cost-saving features:

- One-piece carbon steel construction - simplifies installation, eliminates potential leak points
- Zinc dichromate finish - for high corrosion resistance
- Compact design - simplifies assembly
- Optional thread configurations - BSPP and NPTF - consult factory for availability
- Available off-the-shelf for immediate delivery

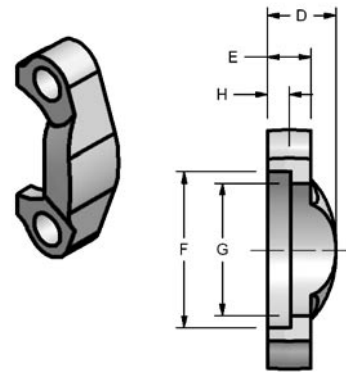
## Ordering System



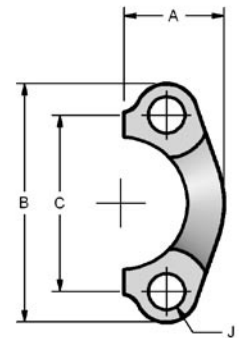
For additional jump sizes, please consult factory.

# SAE J518 Split & Captive Flange

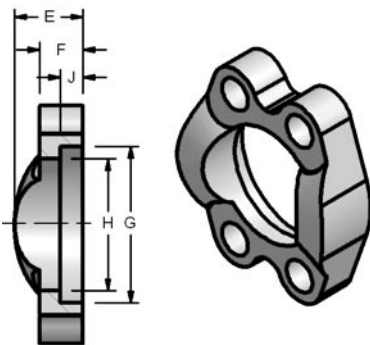
CODE 61 SPLIT FLANGE													
PART NO.	**KIT PART NO.	FLANGE SIZE	A	B	C	D	E	F	G	H	J	MOUNTING HARDWARE	
												O-RING	HHCS
8SF-2	8SFO	.50	.86	2.12	1.500	.80	.50	1.219	.955	.245	.344	210	5/16-18X1.25
12SF-2	12SFO	.75	.98	2.56	1.875	.93	.56	1.531	1.265	.245	.406	214	3/8-16X1.25
16SF-2	16SFO	1.00	1.11	2.75	2.062	.99	.62	1.781	1.515	.295	.406	219	3/8-16X1.25
20SF-2	20SFO	1.25	1.39	3.12	2.312	.93	.56	2.031	1.720	.295	.469	222	7/16-14X1.50
24SF-2	24SFO	1.50	1.58	3.69	2.750	1.05	.62	2.406	2.000	.295	.531	225	1/2-13X1.50
32SF-2	32SFO	2.00	1.86	4.00	3.062	1.08	.62	2.844	2.470	.355	.531	228	1/2-13X1.50
40SF-2	40SFO	2.50	2.09	4.50	3.500	1.55	.75	3.344	2.950	.355	.531	232	1/2-13X1.75
48SF-2	48SFO	3.00	2.53	5.31	4.188	1.67	.88	4.031	3.580	.355	.656	237	5/8-11X1.75
56SF-2	56SFO	3.50	2.70	6.00	4.750	1.17	.88	4.531	4.030	.422	.656	241	5/8-11X2.00
64SF-2	64SFO	4.00	2.95	6.38	5.125	1.43	1.00	5.031	4.530	.422	.656	245	5/8-11X2.00



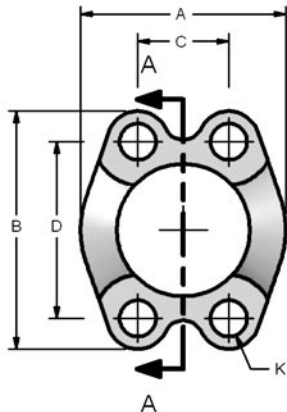
CODE 62 SPLIT FLANGE													
PART NO.	**KIT PART NO.	FLANGE SIZE	A	B	C	D	E	F	G	H	J	MOUNTING HARDWARE	
												O-RING	HHCS
8SFX-2	8SFXO	.50	.89	2.22	1.594	.88	.62	1.281	.970	.285	.344	210	5/16-18X1.25
12SFX-2	12SFXO	.75	1.14	2.81	2.000	1.12	.75	1.656	1.280	.325	.406	214	3/8-16X1.50
16SFX-2	16SFXO	1.00	1.33	3.19	2.250	1.31	.94	1.906	1.530	.355	.469	219	7/16-14X1.75
20SFX-2	20SFXO	1.25	1.48	3.75	2.625	1.50	1.06	2.156	1.750	.385	.531	222	1/2-13X1.75
24SFX-2	24SFXO	1.50	1.83	4.44	3.125	1.69	1.19	2.531	2.030	.475	.656	225	5/8-11X2.25
32SFX-2	32SFXO	2.00	2.20	5.25	3.812	2.06	1.44	3.156	2.660	.475	.781	228	3/4-10X2.75



\*\*When ordering this part # you will receive:(2) split flange halves, (4) hex head screws and lockwashers, and (1) Buna N O-Ring

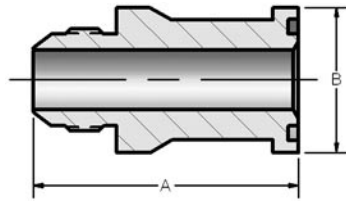


CODE 61 CAPTIVE FLANGE														
DRILLED PART NO.	TAPPED PART NO.	FLANGE SIZE	A	B	C	D	E	F	G	H	J	K	K UNC-2B	
8SFW	8SFTW	.50	1.81	2.12	.688	1.500	.75	.50	1.219	.955	.245	.344	5/16-18	
12SFW	12SFTW	.75	2.06	2.56	.875	1.875	.88	.56	1.531	1.265	.245	.406	3/8-16	
16SFW	16SFTW	1.00	2.31	2.75	1.031	2.062	.94	.62	1.781	1.515	.295	.406	3/8-16	
20SFW	20SFTW	1.25	2.88	3.12	1.188	2.312	.88	.56	2.031	1.720	.295	.469	7/16-14	
24SFW	24SFTW	1.50	3.25	3.69	1.406	2.750	1.00	.62	2.406	2.000	.295	.531	1/2-13	
32SFW	32SFTW	2.00	3.81	4.00	1.688	3.062	1.03	.62	2.844	2.470	.355	.531	1/2-13	
40SFW	40SFTW	2.50	4.28	4.50	2.000	3.500	1.50	.75	3.344	2.950	.355	.531	1/2-13	
48SFW	48SFTW	3.00	5.16	5.31	2.438	4.188	1.62	.88	4.031	3.580	.355	.656	5/8-11	
56SFW	56SFTW	3.50	5.50	6.00	2.750	4.750	1.12	.88	4.531	4.030	.422	.656	5/8-11	
64SFW	64SFTW	4.00	6.00	6.38	3.062	5.125	1.38	1.00	5.031	4.530	.422	.656	5/8-11	



CODE 62 CAPTIVE FLANGE														
DRILLED PART NO.	TAPPED PART NO.	FLANGE SIZE	A	B	C	D	E	F	G	H	J	K	K UNC-2B	
8SFXW	8SFXTW	.50	1.86	2.22	.718	1.594	.88	.62	1.281	.970	.285	.344	5/16-18	
12SFXW	12SFXTW	.75	2.38	2.81	.938	2.000	1.12	.75	1.656	1.280	.325	.406	3/8-16	
16SFXW	16SFXTW	1.00	2.75	3.19	1.094	2.250	1.31	.94	1.906	1.530	.355	.469	7/16-14	
20SFXW	20SFXTW	1.25	3.06	3.75	1.250	2.625	1.50	1.06	2.156	1.750	.385	.531	1/2-13	
24SFXW	24SFXTW	1.50	3.75	4.44	1.438	3.125	1.69	1.19	2.531	2.030	.475	.656	5/8-11	
32SFXW	32SFXTW	2.00	4.50	5.25	1.750	3.812	2.06	1.44	3.156	2.660	.475	.781	3/4-10	

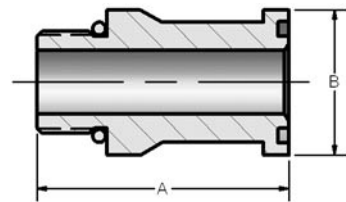
# JIC Thread



CODE 61 JIC THREAD					
PART NO.	TUBE O.D.	FLANGE SIZE	A	B	THREAD
300-8-8	1/2	1/2	2.60	1.188	3/4-16
300-8-12	1/2	3/4	2.75	1.500	3/4-16
300-12-12	3/4	3/4	2.75	1.500	1 1/16-12
300-16-12	1	3/4	2.75	1.500	1 5/16-12
300-12-16	3/4	1	2.80	1.750	1 1/16-12
300-16-16	1	1	2.80	1.750	1 5/16-12
300-20-16	1 1/4	1	2.80	1.750	1 5/8-12
300-16-20	1	1 1/4	2.80	2.000	1 5/16-12
300-20-20	1 1/4	1 1/4	2.80	2.000	1 5/8-12
300-24-20	1 1/2	1 1/4	3.40	2.000	1 7/8-12
300-20-24	1 1/4	1 1/2	3.38	2.375	1 5/8-12
300-24-24	1 1/2	1 1/2	3.50	2.375	1 7/8-12
300-32-24	2	1 1/2	4.20	2.375	2 1/2-12
300-24-32	1 1/2	2	3.73	2.812	1 7/8-12
300-32-32	2	2	3.98	2.812	2 1/2-12

CODE 62 JIC THREAD					
PART NO.	TUBE O.D.	FLANGE SIZE	A	B	THREAD
600-8-8	1/2	1/2	2.61	1.250	3/4-16
600-12-12	3/4	3/4	2.75	1.625	1 1/16-12
600-16-12	1	3/4	2.75	1.625	1 5/16-12
600-12-16	3/4	1	2.80	1.875	1 1/16-12
600-16-16	1	1	2.80	1.875	1 5/16-12
600-20-16	1 1/4	1	2.80	1.875	1 5/8-12
600-16-20	1	1 1/4	3.05	2.125	1 5/16-12
600-20-20	1 1/4	1 1/4	3.05	2.125	1 5/8-12
600-24-20	1 1/2	1 1/4	3.30	2.125	1 7/8-12
600-20-24	1 1/4	1 1/2	3.50	2.500	1 5/8-12
600-24-24	1 1/2	1 1/2	3.50	2.500	1 7/8-12
600-32-24	2	1 1/2	4.49	2.500	2 1/2-12
600-24-32	1 1/2	2	3.98	3.125	1 7/8-12
600-32-32	2	2	4.23	3.125	2 1/2-12

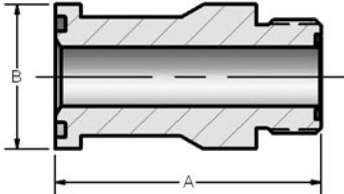
# SAE Straight Thread



CODE 61 SAE STRAIGHT THREAD					
PART NO.	TUBE O.D.	FLANGE SIZE	A	B	THREAD
302-8-8	1/2	1/2	2.49	1.188	3/4-16
302-12-12	3/4	3/4	2.61	1.500	1 1/16-12
302-16-12	1	3/4	2.88	1.500	1 5/16-12
302-12-16	3/4	1	2.74	1.750	1 1/16-12
302-16-16	1	1	2.61	1.750	1 5/16-12
302-20-16	1 1/4	1	3.13	1.750	1 5/8-12
302-16-20	1	1 1/4	2.77	2.000	1 5/16-12
302-20-20	1 1/4	1 1/4	3.13	2.000	1 5/8-12
302-24-20	1 1/2	1 1/4	3.43	2.000	1 7/8-12
302-20-24	1 1/4	1 1/2	3.30	2.375	1 5/8-12
302-24-24	1 1/2	1 1/2	3.14	2.375	1 7/8-12
302-32-24	2	1 1/2	3.63	2.375	2 1/2-12
302-24-32	1 1/2	2	3.79	2.812	1 7/8-12
302-32-32	2	2	3.63	2.812	2 1/2-12

CODE 62 SAE STRAIGHT THREAD					
PART NO.	TUBE O.D.	FLANGE SIZE	A	B	THREAD
602-8-8	1/2	1/2	2.50	1.250	3/4-16
602-12-12	3/4	3/4	2.62	1.625	1 1/16-12
602-16-12	1	3/4	2.88	1.625	1 5/16-12
602-12-16	3/4	1	2.75	1.875	1 1/16-12
602-16-16	1	1	2.62	1.875	1 5/16-12
602-20-16	1 1/4	1	3.44	1.875	1 5/8-12
602-16-20	1	1 1/4	3.12	2.125	1 5/16-12
602-20-20	1 1/4	1 1/4	3.00	2.125	1 5/8-12
602-24-20	1 1/2	1 1/4	3.44	2.125	1 7/8-12
602-20-24	1 1/4	1 1/2	3.31	2.500	1 5/8-12
602-24-24	1 1/2	1 1/2	3.19	2.500	1 7/8-12
602-32-24	2	1 1/2	4.34	2.500	2 1/2-12
602-24-32	1 1/2	2	3.90	3.125	1 7/8-12
602-32-32	2	2	3.75	3.125	2 1/2-12

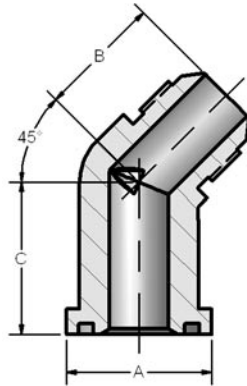
# ORFS Thread



CODE 61 ORFS THREAD					
PART NO.	TUBE O.D.	FLANGE SIZE	A	B	THREAD
304-8-8	1/2	1/2	2.45	1.188	13/16-16
304-12-12	3/4	3/4	2.75	1.500	1 3/16-12
304-16-12	1	3/4	2.75	1.500	1 7/16-12
304-12-16	3/4	1	2.80	1.750	1 3/16-12
304-16-16	1	1	2.80	1.750	1 7/16-12
304-20-16	1 1/4	1	2.80	1.750	1 11/16-12
304-16-20	1	1 1/4	2.80	2.000	1 7/16-12
304-20-20	1 1/4	1 1/4	2.80	2.000	1 11/16-12
304-24-20	1 1/2	1 1/4	3.20	2.000	2-12
304-20-24	1 1/4	1 1/2	3.50	2.375	1 11/16-12
304-24-24	1 1/2	1 1/2	3.50	2.375	2-12
304-24-32	1 1/2	2	3.33	2.812	2-12

CODE 62 ORFS THREAD					
PART NO.	TUBE O.D.	FLANGE SIZE	A	B	THREAD
604-8-8	1/2	1/2	2.58	1.250	13/16-16
604-12-12	3/4	3/4	2.75	1.625	1 3/16-12
604-16-12	1	3/4	2.75	1.625	1 7/16-12
604-12-16	3/4	1	2.80	1.875	1 3/16-12
604-16-16	1	1	2.80	1.875	1 7/16-12
604-20-16	1 1/4	1	3.20	1.875	1 11/16-12
604-16-20	1	1 1/4	3.05	2.125	1 7/16-12
604-20-20	1 1/4	1 1/4	3.05	2.125	1 11/16-12
604-24-20	1 1/2	1 1/4	3.30	2.125	2-12
604-20-24	1 1/4	1 1/2	3.50	2.500	1 11/16-12
604-24-24	1 1/2	1 1/2	3.50	2.500	2-12
604-24-32	1 1/2	2	3.58	3.125	2-12

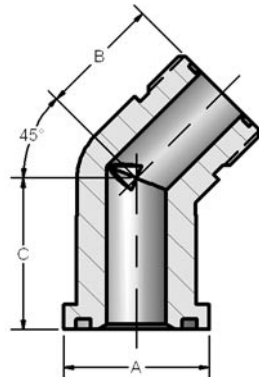
# 45° JIC Thread



CODE 61 45° JIC THREAD						
PART NO.	TUBE O.D.	FLANGE SIZE	A	B	C	THREAD
340-12-12	3/4	3/4	1.500	1.28	1.58	1 1/16-12
340-16-16	1	1	1.750	1.47	1.85	1 5/16-12
340-20-20	1 1/4	1 1/4	2.000	1.59	2.04	1 5/8-12
340-24-24	1 1/2	1 1/2	2.375	1.78	2.38	1 7/8-12
340-32-32	2	2	2.812	2.22	3.00	2 1/2-12

CODE 62 45° JIC THREAD						
PART NO.	TUBE O.D.	FLANGE SIZE	A	B	C	THREAD
640-12-12	3/4	3/4	1.625	1.28	1.58	1 1/16-12
640-16-16	1	1	1.875	1.47	1.85	1 5/16-12
640-20-20	1 1/4	1 1/4	2.125	1.59	2.04	1 5/8-12
640-24-24	1 1/2	1 1/2	2.500	1.78	2.38	1 7/8-12
640-32-32	2	2	3.125	2.22	3.00	2 1/2-12

# 45° ORFS Thread



CODE 61 45° ORFS THREAD						
PART NO.	TUBE O.D.	FLANGE SIZE	A	B	C	THREAD
344-12-12	3/4	3/4	1.500	1.28	1.58	1 3/16-12
344-16-16	1	1	1.750	1.47	1.85	1 7/16-12
344-20-20	1 1/4	1 1/4	2.000	1.59	2.04	1 11/16-12
344-24-24	1 1/2	1 1/2	2.375	1.78	2.38	2-12

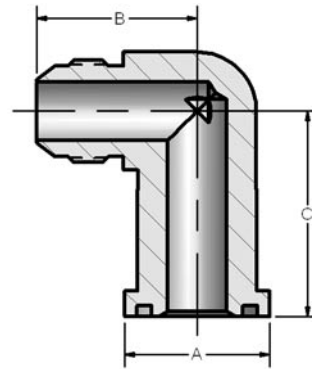
CODE 62 45° ORFS THREAD						
PART NO.	TUBE O.D.	FLANGE SIZE	A	B	C	THREAD
644-12-12	3/4	3/4	1.625	1.28	1.58	1 3/16-12
644-16-16	1	1	1.875	1.47	1.85	1 7/16-12
644-20-20	1 1/4	1 1/4	2.125	1.59	2.04	1 11/16-12
644-24-24	1 1/2	1 1/2	2.500	1.78	2.38	2-12

# 90° JIC Thread

CODE 61 90° JIC THREAD						
PART NO.	TUBE O.D.	FLANGE SIZE	A	B	C	THREAD
390-8-12	1/2	3/4	1.500	1.66	2.13	3/4-16
390-12-12	3/4	3/4	1.500	1.66	2.13	1 1/16-12
390-16-12	1	3/4	1.500	1.66	2.13	1 5/16-12
390-12-16	3/4	1	1.750	1.81	2.37	1 1/16-12
390-16-16	1	1	1.750	1.81	2.37	1 5/16-12
390-20-16	1 1/4	1	1.750	1.81	2.37	1 5/8-12
390-16-20	1	1 1/4	2.000	2.06	2.62	1 5/16-12
390-20-20	1 1/4	1 1/4	2.000	2.06	2.62	1 5/8-12
390-20-24	1 1/4	1 1/2	2.375	2.33	3.15	1 5/8-12
390-24-24	1 1/2	1 1/2	2.375	2.33	3.15	1 7/8-12
390-32-24	2	1 1/2	2.375	2.33	3.15	2 1/2-12
390-24-32	1 1/2	2	2.812	3.06	4.25	1 7/8-12
390-32-32	2	2	2.812	3.06	4.25	2 1/2-12



CODE 62 90° JIC THREAD						
PART NO.	TUBE O.D.	FLANGE SIZE	A	B	C	THREAD
690-8-8	1/2	1/2	1.250	1.66	2.13	3/4-16
690-8-12	1/2	3/4	1.625	1.66	2.13	3/4-16
690-12-12	3/4	3/4	1.625	1.66	2.13	1 1/16-12
690-16-12	1	3/4	1.625	1.66	2.13	1 5/16-12
690-12-16	3/4	1	1.875	1.81	2.37	1 1/16-12
690-16-16	1	1	1.875	1.81	2.37	1 5/16-12
690-20-16	1 1/4	1	1.875	1.81	2.37	1 5/8-12
690-16-20	1	1 1/4	2.125	2.06	2.76	1 5/16-12
690-20-20	1 1/4	1 1/4	2.125	2.06	2.76	1 5/8-12
690-24-20	1 1/2	1 1/4	2.125	2.19	2.76	1 7/8-12
690-20-24	1 1/4	1 1/2	2.500	2.33	3.15	1 5/8-12
690-24-24	1 1/2	1 1/2	2.500	2.33	3.15	1 7/8-12
690-32-24	2	1 1/2	2.500	3.06	4.25	2 1/2-12
690-24-32	1 1/2	2	3.125	3.06	4.25	1 7/8-12
690-32-32	2	2	3.125	3.06	4.25	2 1/2-12

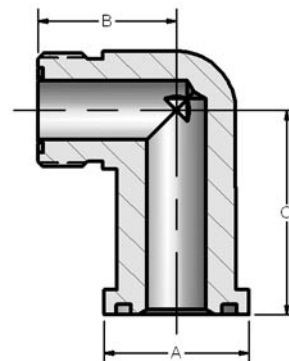


# 90° ORFS Thread

CODE 61 90° ORFS THREAD						
PART NO.	TUBE O.D.	FLANGE SIZE	A	B	C	THREAD
394-12-12	3/4	3/4	1.500	1.66	2.13	1 3/16-12
394-16-12	1	3/4	1.500	1.66	2.13	1 7/16-12
394-12-16	3/4	1	1.750	1.81	2.37	1 3/16-12
394-16-16	1	1	1.750	1.81	2.37	1 7/16-12
394-20-16	1 1/4	1	1.750	1.81	2.37	1 11/16-12
394-16-20	1	1 1/4	2.000	2.06	2.62	1 7/16-12
394-20-20	1 1/4	1 1/4	2.000	2.06	2.62	1 11/16-12
394-24-20	1 1/2	1 1/4	2.000	2.06	2.62	2-12
394-20-24	1 1/4	1 1/2	2.375	2.33	3.15	1 11/16-12
394-24-24	1 1/2	1 1/2	2.375	2.33	3.15	2-12



CODE 62 90° ORFS THREAD						
PART NO.	TUBE O.D.	FLANGE SIZE	A	B	C	THREAD
694-12-12	3/4	3/4	1.625	1.66	2.13	1 3/16-12
694-16-12	1	3/4	1.625	1.66	2.13	1 7/16-12
694-12-16	3/4	1	1.875	1.81	2.37	1 3/16-12
694-16-16	1	1	1.875	1.81	2.37	1 7/16-12
694-20-16	1 1/4	1	1.875	1.81	2.37	1 11/16-12
694-16-20	1	1 1/4	2.125	2.06	2.76	1 7/16-12
694-20-20	1 1/4	1 1/4	2.125	2.06	2.76	1 11/16-12
694-24-20	1 1/2	1 1/4	2.125	2.06	2.76	2-12
694-20-24	1 1/4	1 1/2	2.500	2.33	3.15	1 11/16-12
694-24-24	1 1/2	1 1/2	2.500	2.33	3.15	2-12



# Butt Weld Flange Head

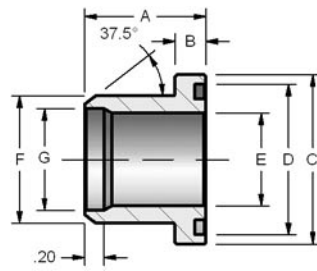


Figure 1

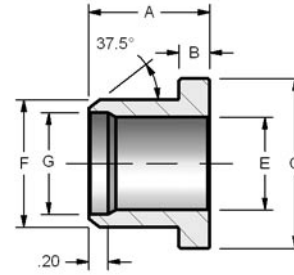


Figure 2

## CODE 61 BUTT WELD TO FLANGE HEAD FOR SCHEDULE 40 PIPE

PART NO. O-RING FIG. 1	PART NO. FLAT FACE FIG. 2	PIPE SIZE	CLAMP SIZE	A	B	C	D	E	F	G
8P-8BWSF-40	8P-8BWSFN-40	.50	.50	1.06	.265	1.188	1.000	.548	.840	.624
12P-12BWSF-40	12P-12BWSFN-40	.75	.75	1.06	.265	1.500	1.250	.744	1.050	.826
16P-16BWSF-40	16P-16BWSFN-40	1.00	1.00	1.25	.315	1.750	1.560	.959	1.315	1.051
20P-20BWSF-40	20P-20BWSFN-40	1.25	1.25	1.44	.315	2.000	1.750	1.280	1.660	1.382
24P-24BWSF-40	24P-24BWSFN-40	1.50	1.50	1.75	.315	2.375	2.115	1.502	1.900	1.612
32P-32BWSF-40	32P-32BWSFN-40	2.00	2.00	2.00	.375	2.812	2.490	1.941	2.375	2.069
40P-40BWSF-40	40P-40BWSFN-40	2.50	2.50	2.31	.375	3.312	2.995	2.325	2.875	2.471
48P-48BWSF-40	48P-48BWSFN-40	3.00	3.00	2.32	.375	4.000	3.615	2.902	3.500	3.070

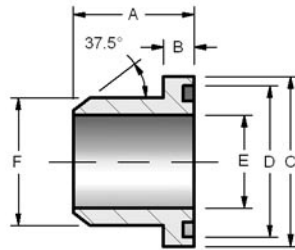


Figure 1

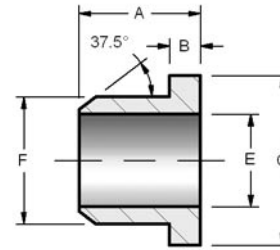


Figure 2

## CODE 61 BUTT WELD TO FLANGE HEAD FOR SCHEDULE 80 PIPE

PART NO. O-RING FIG. 1	PART NO. FLAT FACE FIG. 2	PIPE SIZE	CLAMP SIZE	A	B	C	D	E	F
8P-8BWSF-80	8P-8BWSFN-80	.50	.50	1.06	.265	1.188	1.000	.548	.840
12P-12BWSF-80	12P-12BWSFN-80	.75	.75	1.06	.265	1.500	1.250	.744	1.050
16P-16BWSF-80	16P-16BWSFN-80	1.00	1.00	1.25	.315	1.750	1.560	.959	1.315
20P-20BWSF-80	20P-20BWSFN-80	1.25	1.25	1.44	.315	2.000	1.750	1.280	1.660
24P-24BWSF-80	24P-24BWSFN-80	1.50	1.50	1.75	.315	2.375	2.115	1.502	1.900
32P-32BWSF-80	32P-32BWSFN-80	2.00	2.00	2.00	.375	2.812	2.490	1.941	2.375
40P-40BWSF-80	40P-40BWSFN-80	2.50	2.50	2.31	.375	3.312	2.995	2.325	2.875
48P-48BWSF-80	48P-48BWSFN-80	3.00	3.00	2.32	.375	4.000	3.615	2.902	3.500

## CODE 61 BUTT WELD TO FLANGE HEAD FOR SCHEDULE 160 PIPE

PART NO. O-RING FIG. 1	PART NO. FLAT FACE FIG. 2	PIPE SIZE	CLAMP SIZE	A	B	C	D	E	F
8P-8BWSF-160	8P-8BWSFN-160	.50	.50	1.06	.265	1.188	1.000	.466	.840
12P-12BWSF-160	12P-12BWSFN-160	.75	.75	1.06	.265	1.500	1.250	.614	1.050
16P-16BWSF-160	16P-16BWSFN-160	1.00	1.00	1.25	.315	1.750	1.560	.817	1.315
20P-20BWSF-160	20P-20BWSFN-160	1.25	1.25	1.44	.315	2.000	1.750	1.162	1.660
24P-24BWSF-160	24P-24BWSFN-160	1.50	1.50	1.75	.315	2.375	2.115	1.340	1.900
32P-32BWSF-160	32P-32BWSFN-160	2.00	2.00	2.00	.375	2.812	2.490	1.689	2.375
40P-40BWSF-160	40P-40BWSFN-160	2.50	2.50	2.31	.375	3.312	2.995	2.127	2.875
48P-40BWSF-160	48P-40BWSFN-160	3.00	3.00	2.32	.375	4.000	3.615	2.626	3.500

# Butt Weld Flange Head

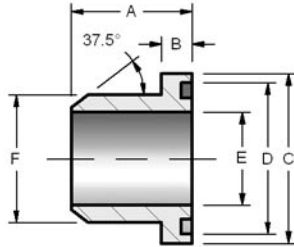


Figure 1

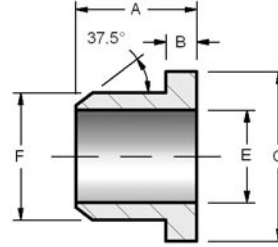


Figure 2

CODE 62 BUTT WELD TO FLANGE HEAD FOR SCHEDULE 80 PIPE									
PART NO. O-RING FIG. 1	PART NO. FLAT FACE FIG. 2	PIPE SIZE	CLAMP SIZE	A	B	C	D	E	F
8P-8BWSFX-80	8P-8BWSFXN-80	.50	.50	1.10	.305	1.250	1.000	.548	.840
12P-12BWSFX-80	12P-12BWSFXN-80	.75	.75	1.42	.345	1.625	1.250	.744	1.050
16P-16BWSFX-80	16P-16BWSFXN-80	1.00	1.00	1.61	.375	1.875	1.560	.959	1.315
20P-20BWSFX-80	20P-20BWSFXN-80	1.25	1.25	1.73	.405	2.125	1.750	1.280	1.660
24P-24BWSFX-80	24P-24BWSFXN-80	1.50	1.50	2.17	.495	2.500	2.115	1.502	1.900
32P-32BWSFX-80	32P-32BWSFXN-80	2.00	2.00	2.48	.495	3.125	2.490	1.941	2.375

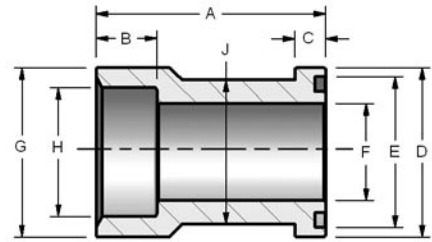
CODE 62 BUTT WELD TO FLANGE HEAD FOR SCHEDULE 160 PIPE									
PART NO. O-RING FIG. 1	PART NO. FLAT FACE FIG. 2	PIPE SIZE	CLAMP SIZE	A	B	C	D	E	F
8P-8BWSFX-160	8P-8BWSFXN-160	.50	.50	1.10	.305	1.250	1.000	.466	.840
12P-12BWSFX-160	12P-12BWSFXN-160	.75	.75	1.42	.345	1.625	1.250	.614	1.050
16P-16BWSFX-160	16P-16BWSFXN-160	1.00	1.00	1.61	.375	1.875	1.560	.817	1.315
20P-20BWSFX-160	20P-20BWSFXN-160	1.25	1.25	1.73	.405	2.125	1.750	1.162	1.660
24P-24BWSFX-160	24P-24BWSFXN-160	1.50	1.50	2.17	.495	2.500	2.115	1.340	1.900
32P-32BWSFX-160	32P-32BWSFXN-160	2.00	2.00	2.48	.495	3.125	2.490	1.689	2.375

CODE 62 BUTT WELD TO FLANGE HEAD FOR SCHEDULE XXS PIPE									
PART NO. O-RING FIG. 1	PART NO. FLAT FACE FIG. 2	PIPE SIZE	CLAMP SIZE	A	B	C	D	E	F
8P-8BWSFX-XXS	8P-8BWSFXN-XXS	.50	.50	1.10	.305	1.250	1.000	.254	.840
12P-12BWSFX-XXS	12P-12BWSFXN-XXS	.75	.75	1.42	.345	1.625	1.250	.436	1.050
16P-16BWSFX-XXS	16P-16BWSFXN-XXS	1.00	1.00	1.61	.375	1.875	1.560	.601	1.315
20P-20BWSFX-XXS	20P-20BWSFXN-XXS	1.25	1.25	1.73	.405	2.125	1.750	.898	1.660
24P-24BWSFX-XXS	24P-24BWSFXN-XXS	1.50	1.50	2.17	.495	2.500	2.115	1.102	1.900
32P-32BWSFX-XXS	32P-32BWSFXN-XXS	2.00	2.00	2.48	.495	3.125	2.490	1.505	2.375

# Female Flange Head Adapter

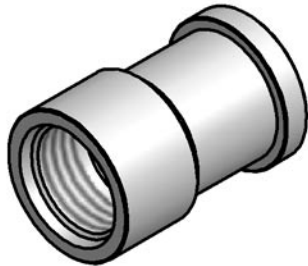
## CODE 61 SOCKET WELD TO FLANGE HEAD FOR PIPE

PART NO.	PIPE SIZE	CLAMP SIZE	A	B	C	D	E	F	G	H	J
8P-8WSF	.50	.50	2.34	.56	.265	1.187	1.000	.500	1.25	.855	.924
12P-12WSF	.75	.75	2.34	.56	.265	1.500	1.250	.750	1.50	1.062	1.234
16P-16WSF	1.00	1.00	2.38	.63	.315	1.750	1.560	1.000	1.75	1.328	1.484
20P-20WSF	1.25	1.25	2.62	.68	.315	2.000	1.750	1.250	2.00	1.672	1.684
24P-24WSF	1.50	1.50	2.88	.76	.315	2.375	2.115	1.500	2.38	1.922	1.964
32P-32WSF	2.00	2.00	3.00	.88	.375	2.812	2.490	2.000	2.81	2.406	2.434
40P-40WSF	2.50	2.50	3.06	1.00	.375	3.312	2.995	2.500	3.31	2.906	2.920
48P-48WSF	3.00	3.00	3.88	1.25	.375	4.000	3.615	2.875	4.00	3.547	3.534



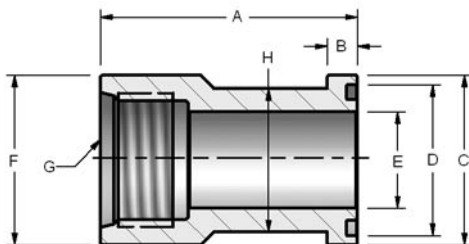
## CODE 62 SOCKET WELD TO FLANGE HEAD FOR PIPE

PART NO.	PIPE SIZE	CLAMP SIZE	A	B	C	D	E	F	G	H	J
W53-12-12	.75	.75	2.75	.630	.345	1.625	1.250	.750	1.750	1.062	1.234
W53-16-16	1.00	1.00	3.06	.630	.375	1.875	1.560	1.000	2.000	1.328	1.484
W53-20-20	1.25	1.25	3.31	.690	.405	2.125	1.750	1.125	2.312	1.672	1.704
W53-24-24	1.50	1.50	3.93	.750	.495	2.500	2.115	1.375	2.750	1.922	1.984
W53-32-32	2.00	2.00	4.06	.880	.495	3.125	2.490	1.875	3.125	2.406	2.604



## CODE 61 NPTF THREAD TO FLANGE HEAD

PART NO.	PIPE SIZE	CLAMP SIZE	A	B	C	D	E	F	G NPTF	H
12F-12FO	.75	.75	2.47	.265	1.500	1.250	.75	1.50	.75	1.234
16F-16FO	1.00	1.00	2.66	.315	1.750	1.560	1.00	1.75	1.00	1.484
20F-20FO	1.25	1.25	2.84	.315	2.000	1.750	1.25	2.00	1.25	1.684
24F-24FO	1.50	1.50	3.00	.315	2.375	2.115	1.50	2.38	1.50	1.964
32F-32FO	2.00	2.00	3.00	.375	2.812	2.490	2.00	2.81	2.00	2.434



## CODE 61 SAE THREAD TO FLANGE HEAD

PART NO.	TUBE SIZE	CLAMP SIZE	A	B	C	D	E	F	G UN-2B	H
12S-12FO	.75	.75	2.47	.265	1.500	1.250	.75	1.50	1 1/16-12	1.234
16S-16FO	1.00	1.00	2.66	.315	1.750	1.560	1.00	1.75	1 5/16-12	1.484
20S-20FO	1.25	1.25	2.84	.315	2.000	1.750	1.25	2.00	1 5/8-12	1.684
24S-24FO	1.50	1.50	3.00	.315	2.375	2.115	1.50	2.38	1 7/8-12	1.964
32S-32FO	2.00	2.00	3.00	.375	2.812	2.490	2.00	2.81	2 1/2-12	2.434